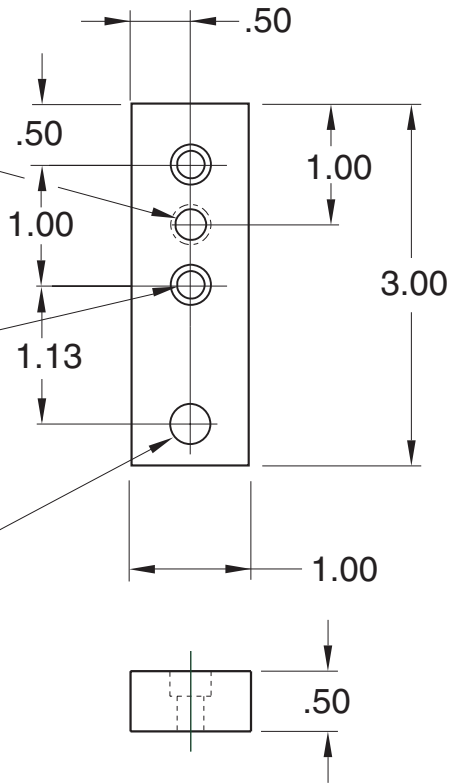


11-48A 3/8-16 UNC thru
11-48B 1/2-13 UNC thru

Drilled & C'Bored
 for 1/4-20 SHCS
 (2) plcs

7/16" Dia. thru
 for floor anchor



1/4" SLOTS

Recommended
 Hardware
 (2) 11-223 SHCS

Material - Aluminum
 Finish - Clear Anodize